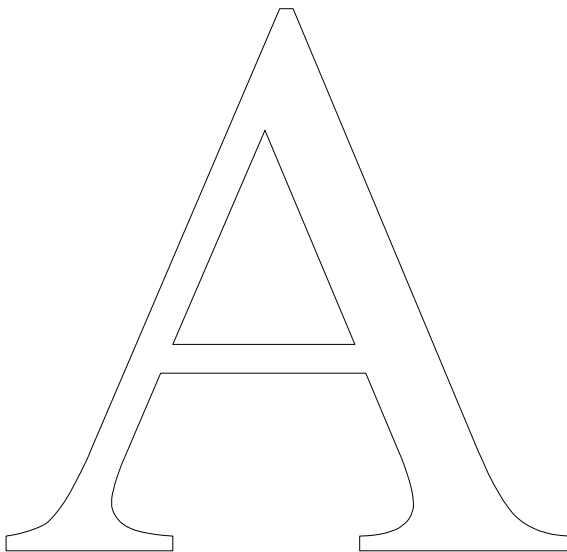


REMT 2006

ANSWERS



ARITHMETICAL

ANALYSIS

1. 2550
2. 45
3. 33
4. 28
5. 2592
6. 42
7. 22
8. $\frac{5}{12}$
9. $\frac{3}{10}$
10. $\frac{8}{3}$
11. 6
12. 80
13. 52
14. 48
15. 24

REMT 2006

ANSWERS



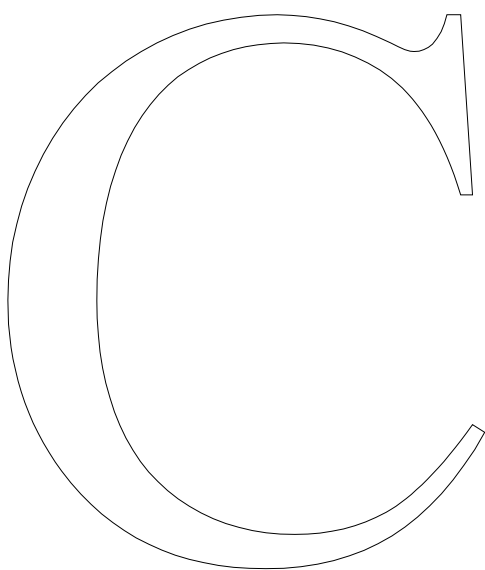
CALCULATIONAL

COMPUTATION

1. 2550
2. 300
3. 348
4. $\frac{7}{2}$
5. 29
6. $\frac{152}{333}$
7. $\frac{-3a+2}{a-1}$
8. $\frac{x-1}{x+2}$
9. $\frac{3}{x-9}$
10. $\frac{12}{5}$
11. 80
12. 24
13. $\sqrt[3]{4}$
14. 45
15. 12

REMT 2006

ANSWERS



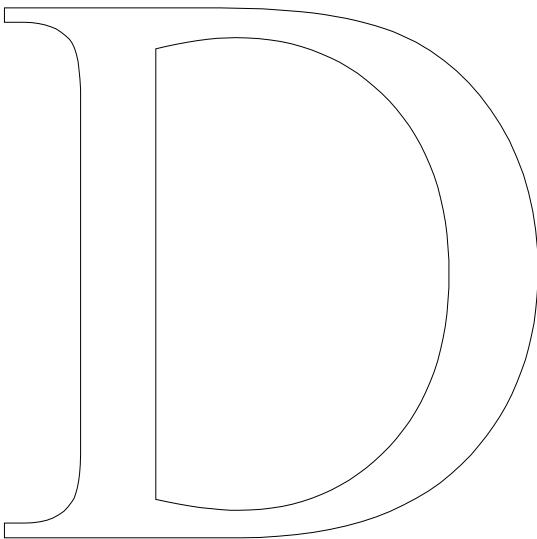
MATHEMATICAL

MANIPULATION

1. 2550
2. 348
3. $\frac{-3a+2}{a-1}$
4. $\frac{x-1}{x+2}$
5. $\frac{3}{x-9}$
6. 29
7. 45
8. 40
9. $21\frac{1}{2}$
10. 96
11. $-1+\sqrt{26}$
12. 2, -3
13. $\tan x$
14. 20
15. 9.2

REMT 2006

ANSWERS

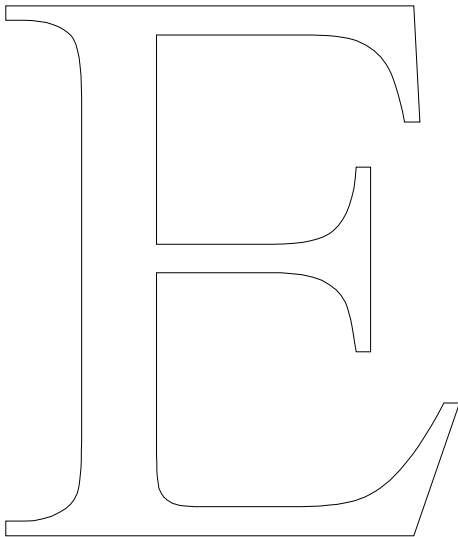


**SHAPES
AND SIZES**

- | | | | |
|-----|--------------------|-----|------|
| 1. | right triangle | 13. | 40 |
| 2. | isosceles triangle | 14. | 30 |
| 3. | trapezoid | 15. | 56 |
| 4. | pentagon | 16. | 9.4 |
| 5. | parallelogram | 17. | 25.1 |
| 6. | octagon | 18. | 50.3 |
| 7. | cone | 19. | 30 |
| 8. | prism | 20. | 95 |
| 9. | sphere | 21. | 120 |
| 10. | ellipse | 22. | 276 |
| 11. | altitude | 23. | 280 |
| 12. | diameter | 24. | 44 |

REMT 2006

ANSWERS



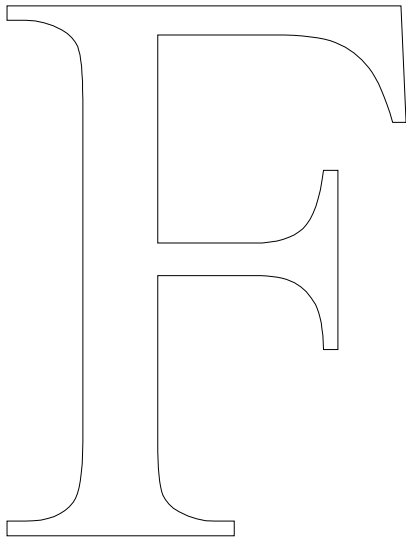
GEOMETRICAL

GEMS

1. 95
2. 120
3. 44
4. 110
5. 56
6. 84
7. $-1 + \sqrt{2}$
8. $\frac{\sqrt{2}}{2}$
9. $6 + 4\sqrt{2}$
10. $\frac{1}{3}$
11. 110
12. 36

REMT 2006

ANSWERS



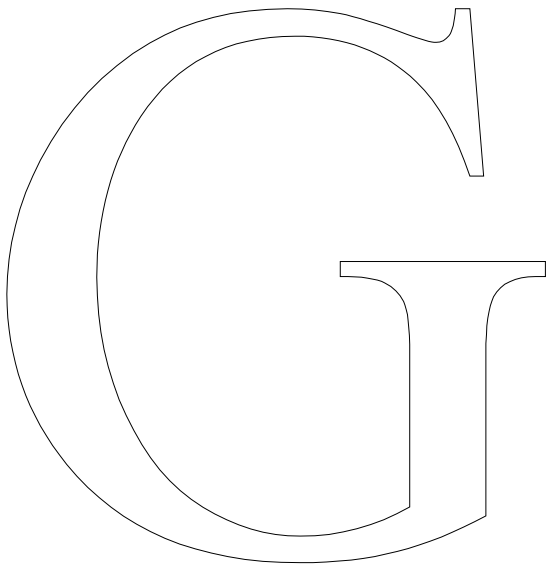
MATHEMATICAL

THOUGHT

1. 60
2. 14:18
3. 45
4. 8,294,400
5. 6
6. $\frac{5}{12}$
7. 17.20
8. 83
9. 13
10. 12
11. 150
12. 350
13. 45
14. 10
15. 6

REMT 2006

ANSWERS



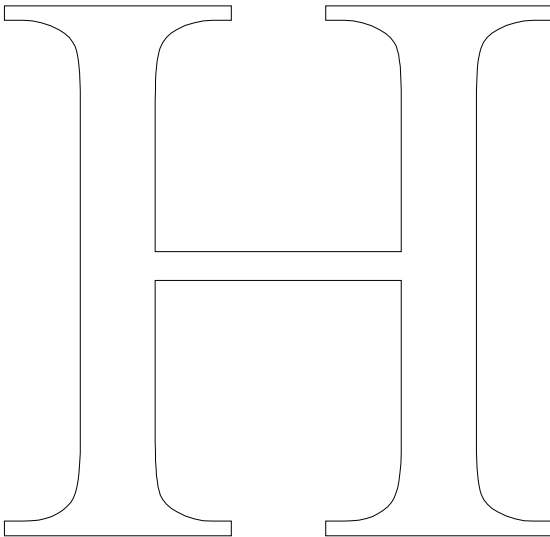
1. 75
2. 14:18
3. 45
4. $\frac{45}{16}$
5. 10
6. $\frac{5}{12}$
7. 17.20
8. 72
9. 80
10. $3\frac{1}{2}$
11. 240
12. $1\frac{1}{2}$
13. 45
14. 10
15. 6

MATHEMATICAL

REASONING

REMT 2006

ANSWERS



MATHEMATICAL

LOGISTICS

- | | |
|-----|----------------|
| 1. | 75 |
| 2. | 3 |
| 3. | 45 |
| 4. | 30 |
| 5. | 20 |
| 6. | $\frac{5}{12}$ |
| 7. | 390 |
| 8. | 72 |
| 9. | 80 |
| 10. | $3\frac{1}{2}$ |
| 11. | 240 |
| 12. | $1\frac{1}{2}$ |
| 13. | 45 |
| 14. | 10 |
| 15. | 6 |