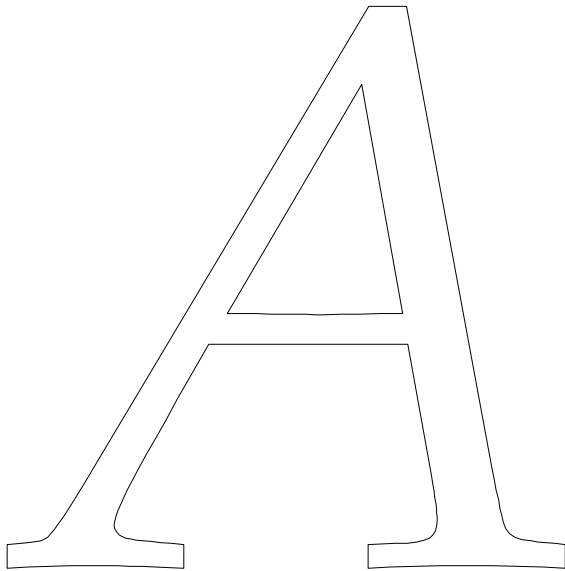


***REMT 2007***

***ANSWERS***



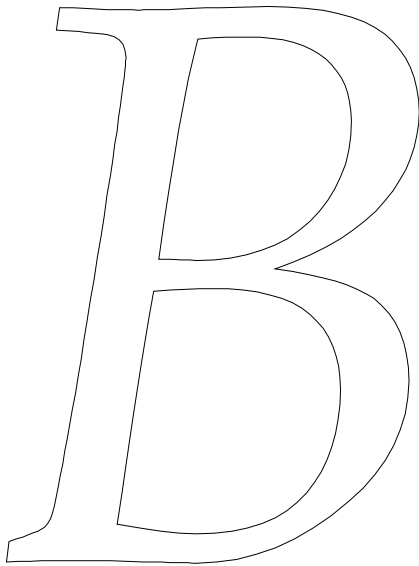
***ARITHMETICAL***

***ANALYSIS***

1. 250,000
2. 63
3.  $1\frac{3}{4}$
4. 45
5. 63
6. 168
7. 25
8.  $\frac{7}{12}$
9.  $\frac{3}{5}$
10. 52
11. 125
12.  $\frac{3}{2}$
13. 45
14. 8:20
15. 512

**REMT 2007**

**ANSWERS**



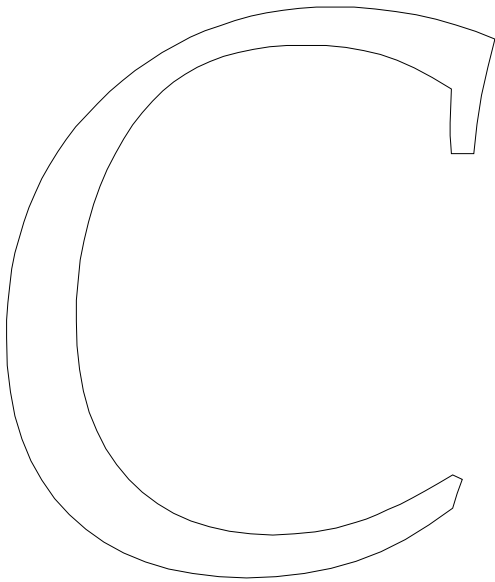
**CALCULATIONAL**

**COMPUTATION**

1. 125
2.  $\frac{3}{2}$
3. 45
4. 8:20
5. 512
6.  $\frac{7}{2}$
7.  $\sqrt{5}$
8.  $\frac{25}{4}$
9.  $\frac{3+x}{2+3x}$
10.  $x^2y^3z^4$
11.  $\frac{x+1}{x-2}$
12.  $\frac{2}{4-x}$
13.  $\frac{18}{5}$
14.  $\frac{a+1}{a-2}$
15. 14

**REMT 2007**

**ANSWERS**



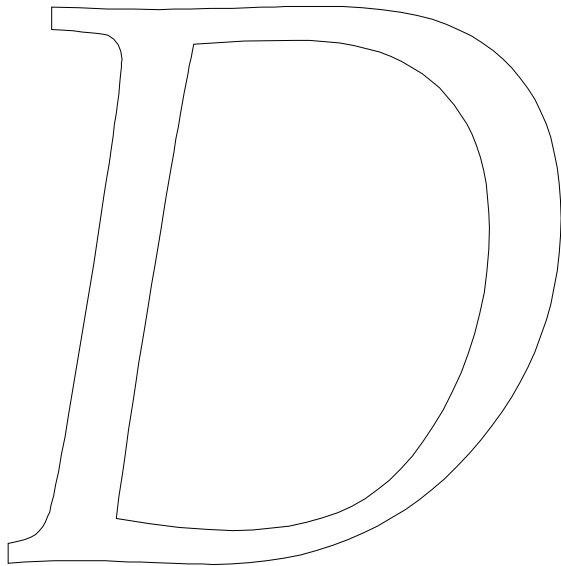
**MATHEMATICAL**

**MANIPULATION**

1.  $\frac{x+1}{x-2}$
2.  $\frac{2}{4-x}$
3.  $\frac{18}{5}$
4.  $\frac{a+1}{a-2}$
5. 14
6.  $\frac{1}{5}x + \frac{3}{5}$
7. -2
8. 16
9.  $\frac{1}{3}$
10.  $\frac{1}{4}$
11. 10
12.  $\sin x$
13. 233
14. 13
15. 8.5

**REMT 2007**

**ANSWERS**

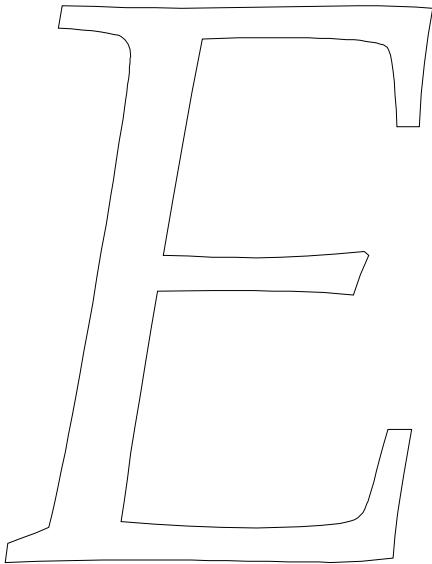


**SHAPES  
AND SIZES**

- |     |                    |     |     |
|-----|--------------------|-----|-----|
| 1.  | right triangle     | 13. | 75  |
| 2.  | parallelogram      | 14. | 38  |
| 3.  | isosceles triangle | 15. | 84  |
| 4.  | trapezoid          | 16. | 14  |
| 5.  | pentagon           | 17. | 44  |
| 6.  | hexagon            | 18. | 154 |
| 7.  | pyramid            | 19. | 16  |
| 8.  | cylinder           | 20. | 70  |
| 9.  | torus              | 21. | 42  |
| 10. | parabola           | 22. | 664 |
| 11. | right              | 23. | 960 |
| 12. | helix              | 24. | 250 |

**REMT 2007**

**ANSWERS**



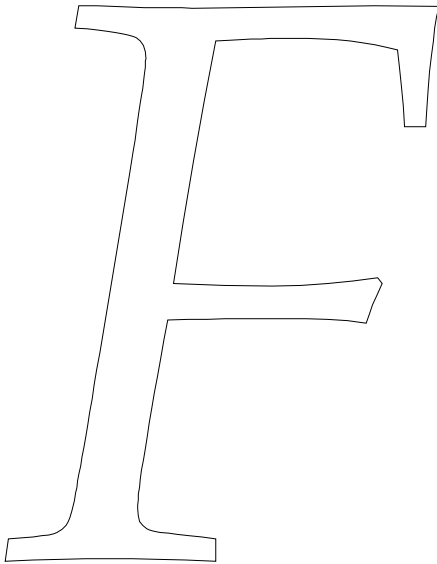
- 1. 90
- 2.  $\frac{4}{9}$
- 3. 200
- 4. 800
- 5. 44
- 6. 154
- 7. 36
- 8.  $\frac{9}{2}$
- 9. 8
- 10. 42
- 11. 25
- 12.  $\frac{\sqrt{3}}{\pi}$

**GEOMETRICAL**

**GEMS**

***REMT 2007***

***ANSWERS***



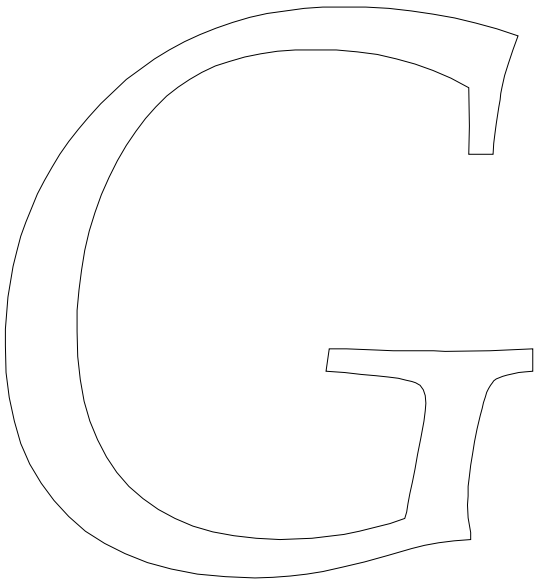
***MATHEMATICAL***

***THOUGHT***

1. 51,840
2. 36
3. 6
4. 5
5. 20
6. 970,299
7. 37
8. 1,250
9. 10:15
10. 700
11. 65
12. 676,000
13. 120
14. 60
15. 250

**REMT 2007**

**ANSWERS**



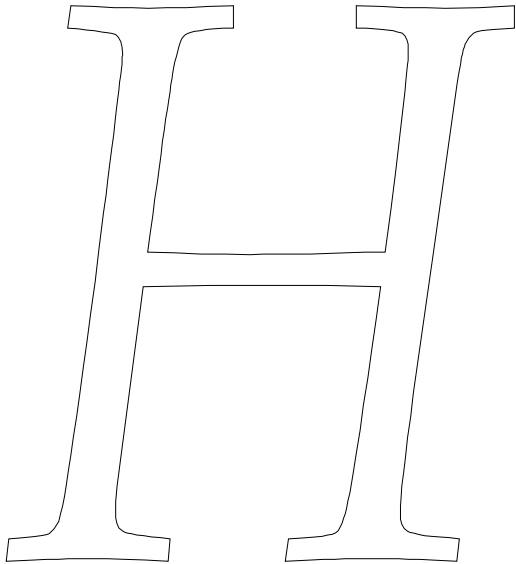
**MATHEMATICAL**

**REASONING**

1. 970,299
2. 37
3. 1,250
4. 10:15
5. 700
6.  $\frac{7}{18}$
7.  $\frac{1}{2}$
8.  $\frac{5}{12}$
9. 83
10. 30
11. 65
12. 676,000
13. 120
14. 60
15. 250

***REMT 2007***

***ANSWERS***



***MATHEMATICAL***

***LOGISTICS***

1.  $\frac{7}{18}$
2.  $\frac{1}{2}$
3.  $\frac{5}{12}$
4. 83
5. 30
6. 0
7. 15
8. 45
9. 42
10. 1,105
11. 65
12. 676,000
13. 120
14. 60
15. 250