



**United States Department of the Interior**  
**GEOLOGICAL SURVEY**  
**California Cooperative Fishery Research Unit**  
Humboldt State University  
Arcata, California 95521-8299  
707-826-3268, FAX 707-826-3269



CA CO-OP FISH  
RESEARCH UNIT

## **Prairie Creek Life Cycle Monitoring Station**

March 1, 2011

Final Project Report

Humboldt State University, Sponsored Programs Foundation

Agreement No. P0810315

*Prepared for:*

California Department of Fish and Game

Fisheries Restoration Grants Program

*by*

Walter G. Duffy

California Cooperative Fish Research Unit

Humboldt State University

Arcata, CA 95521

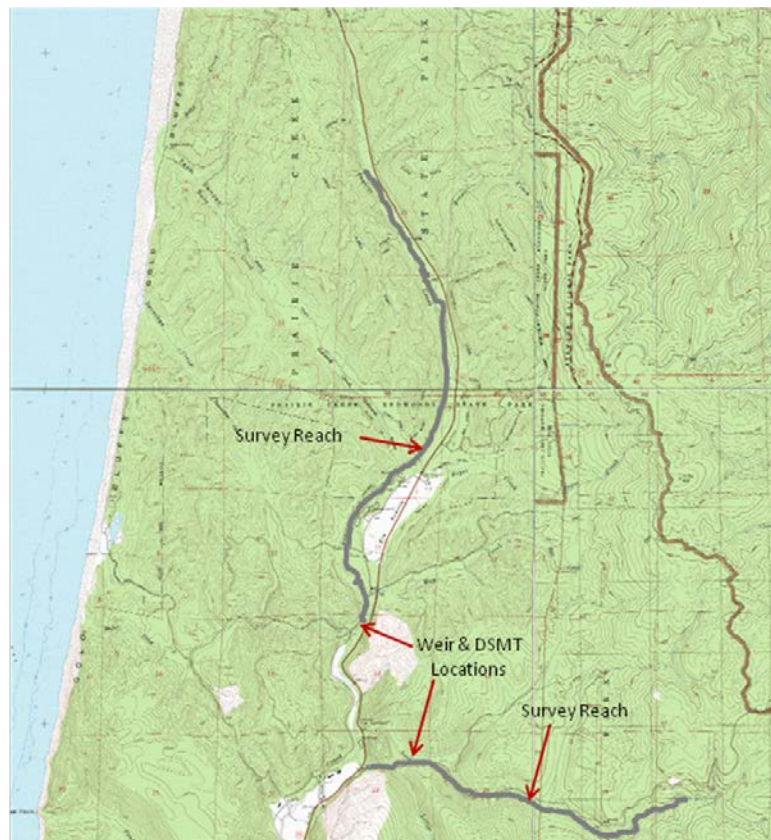
**Grantee Name and Contact Information:** Humboldt State University, Sponsored Programs Foundation, P.O. Box 1185, Arcata, CA, 95518, Phone: (707) 826-4189, Fax: (707) 826-4783, Email: [hsuf@humboldt.edu](mailto:hsuf@humboldt.edu)

**Author Information:** Walter Duffy, California Cooperative Fish and Wildlife Unit, Humboldt State University, Arcata, CA 95521, Phone: 707-826-5644, email: [walter.duffy@humboldt.edu](mailto:walter.duffy@humboldt.edu)

### Overview of project:

This project continued monitoring of juvenile, smolt and adult life stages of coho and Chinook salmon, steelhead and coastal cutthroat trout in the Prairie Creek sub-basin of Redwood Creek during June 2009 through March 2011.

### Location Map:



Map of Prairie Creek sub-basin with survey reaches and locations of weirs and downstream migrant traps identified.

**Final Budget:**

<b>DETAILED PROJECT BUDGET</b>				
<b>PROJECT NAME: Prairie Creek Sub-basin Life Cycle Monitoring Project</b>				
	<b>Amount Requested</b>	<b>Applicant Amt. of Cost Share</b>	<b>Total</b>	<b>Actual Project Cost</b>
<b>A. PERSONNEL SERVICES</b>				
Level of Staff				
Senior biologist	\$0	\$21,000	\$21,000	\$21,000
Graduate student	\$27,997	\$0	\$27,997	\$27,997
Technician	\$53,760	\$0	\$55,760	\$55,760
<b>Subtotal</b>	<b>\$81,757</b>	<b>\$21,000</b>	<b>\$104,757</b>	<b>\$104,757</b>
Staff Benefits @ 18 (max funded 31%)	\$12,264	\$0	\$12,264	\$2,188
<b>TOTAL PERSONNEL SERVICES</b>	<b>\$94,021</b>	<b>\$21,000</b>	<b>\$117,021</b>	<b>\$117,021</b>
<b>B. OPERATING EXPENSES</b>				
<u>Materials and Supplies (indicate type of units)</u>				
Miscellaneous supplies	\$594	\$2,000	\$4,594	\$4,594
Travel	\$18,144	\$0	\$14,144	\$14,144
<b>Subtotals of Materials &amp; Supplies</b>	<b>\$18,738</b>	<b>\$2,000</b>	<b>\$18,738</b>	<b>\$18,738</b>
<b>TOTAL OPERATING EXPENSES</b>				
<b>C. SUBTOTALS &amp; ADMIN</b>				
Subtotal A + B (Personnel + Operating)	\$112,759	\$23,000	\$135,759	\$135,759
Administrative Overhead (max. 15%) @	\$16,914	\$0	\$16,914	\$16,914
<b>D. GRAND TOTAL</b>	<b>\$129,763</b>	<b>\$23,000</b>	<b>\$152,673</b>	<b>\$152,523</b>

**Final Manuscript:**

Attached as MS Word ffile

**Final Sampling Database:**

Attached as MS Excel file

**Data Compilations:**

None

**Other publications:**

None

**Performance Measures:**

<b>Measure Category</b>	<b>Measure</b>
Overall stream length treated (miles, count one side of stream only)	N/A
Area (footprint) of instream features installed within bankfull channel (square feet)	N/A
Length of aquatic habitat disturbed (feet)	N/A
Watershed area monitored (acres)	14,200
Name of comprehensive monitoring strategy/program (text)	MD
Area of water monitored (square miles)	22.3
Length of stream monitored for adult salmonids (miles)	11.2
Length of stream monitored for salmonid smolt or fry (miles)	11.2
Length of stream monitored for biological indices (other than salmon) (miles)	N/A
Length of stream monitored for redds (miles)	11.2
Length of stream monitored for carcasses (miles)	11.2
Length of stream monitored for harvest (miles)	N/A
Area monitored for harvest (square miles)	N/A
Length of stream covered by test fishery (miles)	N/A
Area covered by test fishery (square miles)	N/A
Length of stream monitored for water quality (miles)	N/A
Length of stream monitored for water quantity (flow) (miles)	N/A
Area of ocean monitored (square miles)	N/A
Length of stream monitored for habitat condition (miles)	9.0
Area of watershed monitored for habitat condition (acres)	14,200
Length of stream in the intensively monitored watershed (miles)	N/A
Area of the intensively monitored watershed (acres)	N/A
Reports prepared on key management or restoration data (number)	N/A
Stream sites monitored (number)	N/A
Stream length monitored (miles)	N/A
Name of report prepared (text)	N/A
Number of cooperating organizations (number)	N/A
Name(s) of cooperating organizations (text)	N/A
Name of habitat restoration project complemented by this research/monitoring project (text)	N/A
Name of plan or watershed assessment that identifies this research/monitoring project (text)	N/A

**Photos:**

None