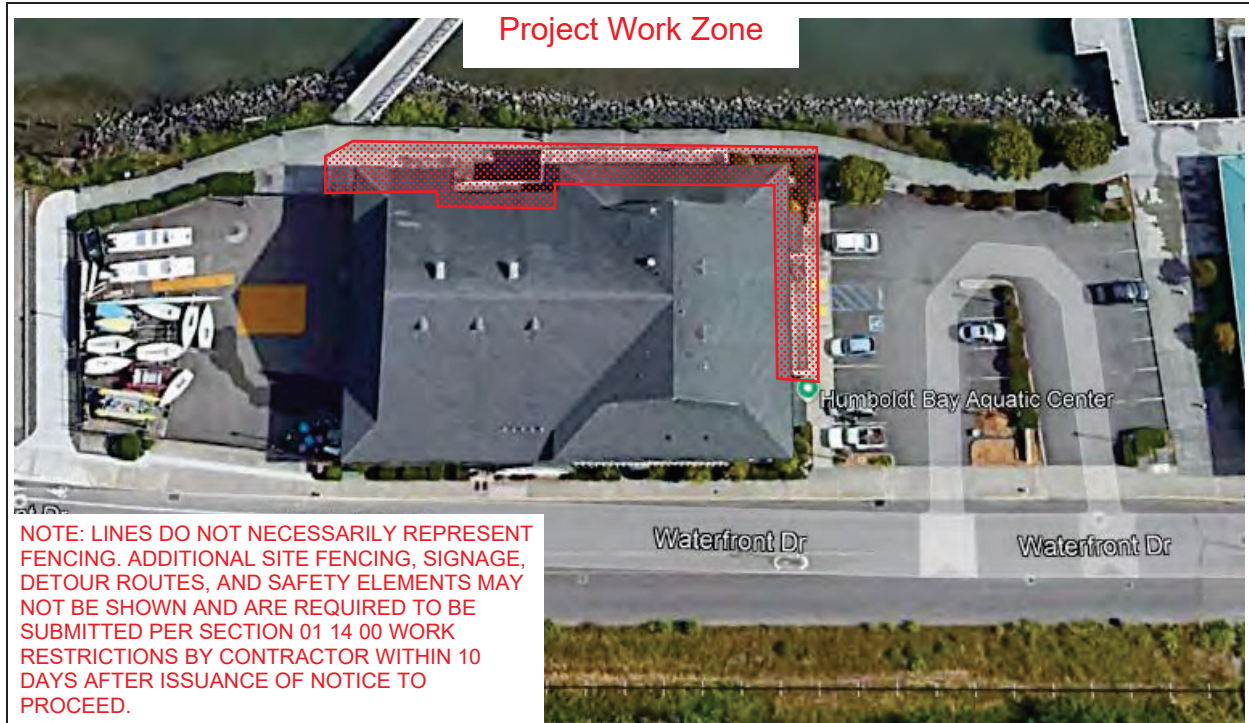


PW25-4
Exhibit G
Page 1 of 4

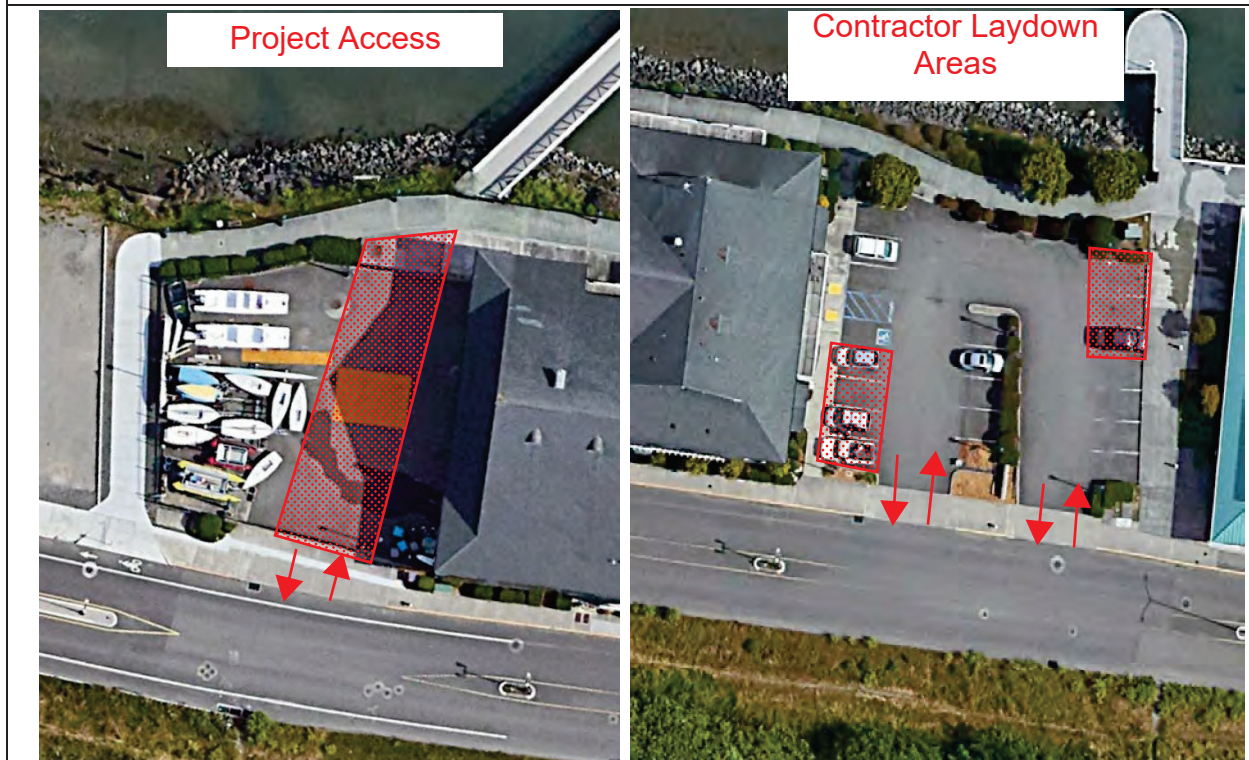
XPL 286 HBAC Balcony Repairs



CAL POLY HUMBOLDT



HBAC - Project Area, Contractor Access and LDA



Student and Employee Access to be Preserved

West fenced area for Contractor access for loading and unloading only - Area to be kept clear for HBAC use.

Contractor laydown area - Driveway entryways to be kept clear and unobstructed for HBAC tenant use

CAL POLY HUMBOLDT



HBAC - Employee Access to be Preserved



Keep an accessible route clear at all times during construction. When the ramp at the ADA stall is closed, clearly mark alternate route as shown above.

CAL POLY HUMBOLDT



HBAC – Access to be Preserved



Access to Dock



Access to Boat Yard

Keep dock and boat yard access clear