

FIGURE 1 - PROJECT VACINITY MAP

PLY114 - PARKING LOT G14 EXPANSION PROJECT
14TH & B STREETS, ARCATA, CA

CAL POLY HUMBOLDT
FACILITIES MANAGEMENT - PLANNING, DESIGN & CONSTRUCTION
MARCH 2026 (REV. 0)

GENERAL NOTES:

- MAINTAIN VEHICLE ACCESS ALONG ROADWAYS AND PEDESTRIAN ACCESS ON WALKWAYS TO THE EXTENT PRACTICAL FOR THE DURATION OF THE PROJECT.
- COORDINATE ROADWAY AND SIDEWALK CLOSURE WITH UNIVERSITY. ALL CLOSURES MUST BE APPROVED THROUGH TRAFFIC CONTROL SUBMITTAL.
- PROVIDE TRAFFIC CONTROL AND DETOUR SIGNAGE FOR ALL ROADWAY AND WALKWAY CLOSURES. PROVIDE FLAGGERS AS NEEDED FOR PARTIAL ROADWAY CLOSURES.
- PROVIDE AND MAINTAIN TEMPORARY BARRIERS AND SIGNAGE TO EXCLUDE THE PUBLIC FROM THE WORK AREA AND PROTECT PUBLIC SAFETY IN THE VACINITY.
- PROVIDE EMERGENCY VEHICLE ACCESS TO AND FROM THE WORK AREA AT ANY TIME AS NEEDED.

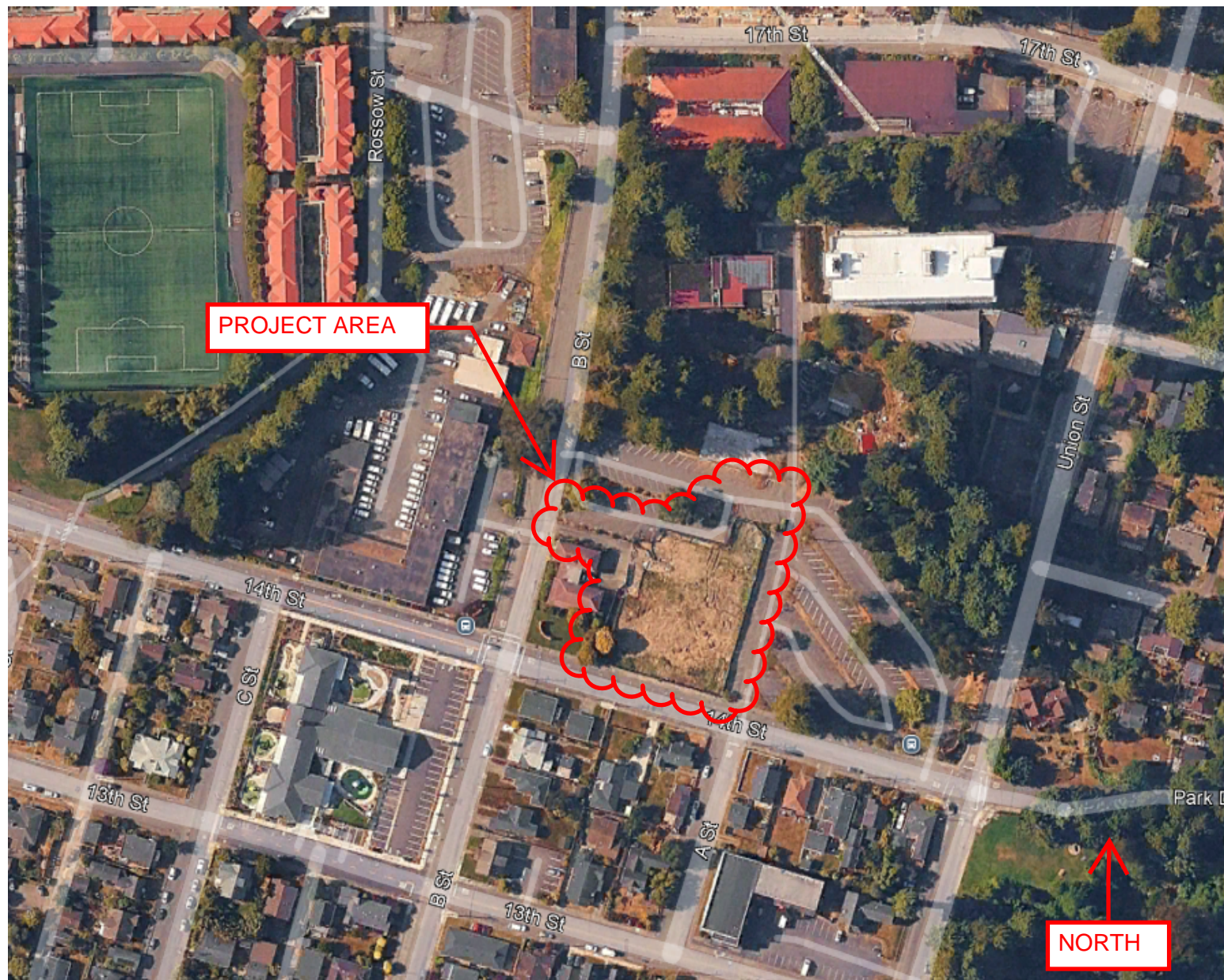


FIGURE 2 - CONTRACTOR LAYDOWN AREA - SUMMER

LAYDOWN AREA AVAILABLE BEFORE AUGUST 22, 2026
PLY114 - PARKING LOT G14 EXPANSION PROJECT
14TH & B STREETS, ARCATA, CA

CAL POLY HUMBOLDT
FACILITIES MANAGEMENT - PLANNING, DESIGN & CONSTRUCTION
MARCH 2026 (REV. 0)

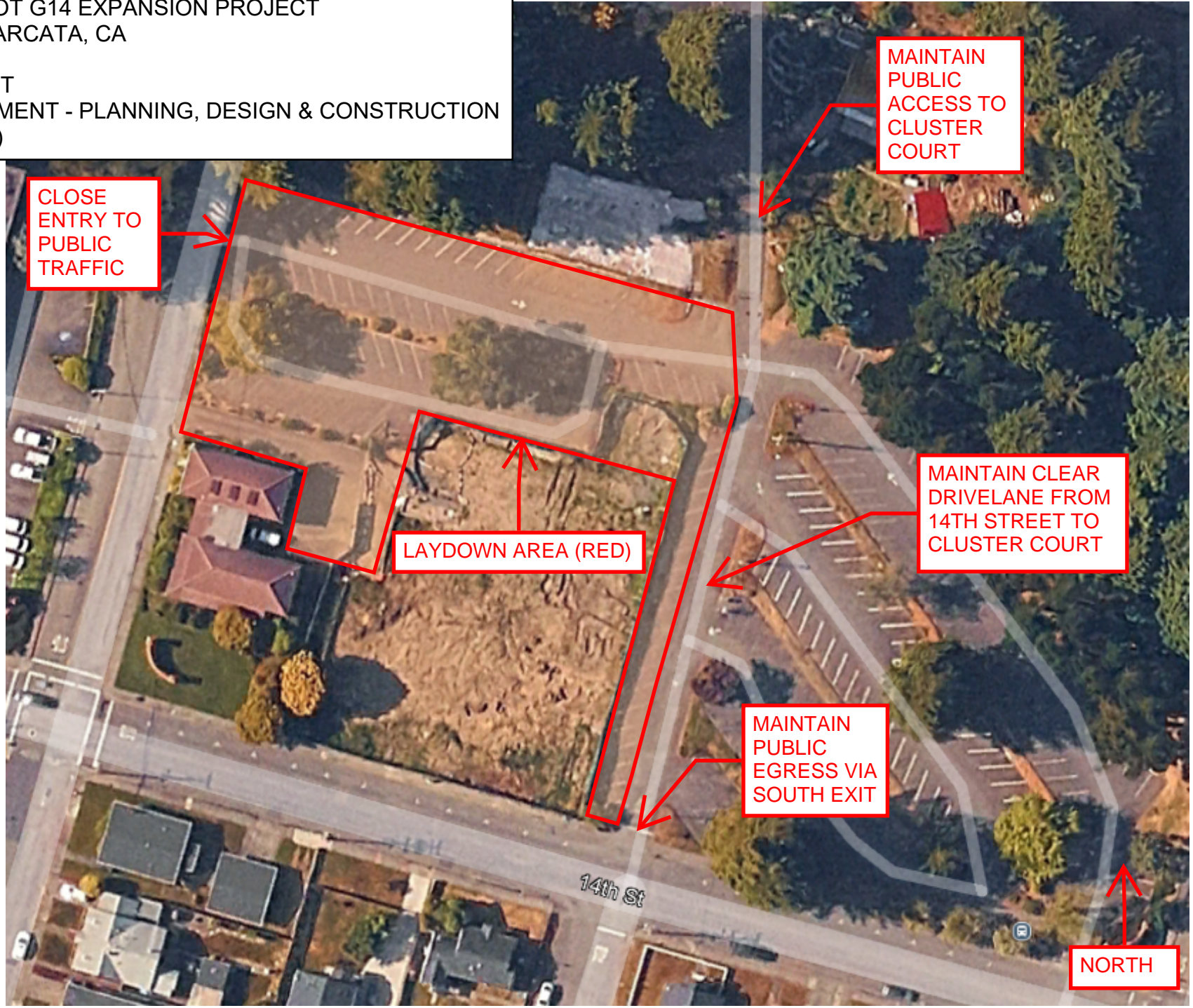


FIGURE 3 - CONTRACTOR LAYDOWN AREA - FALL SEMESTER

LAYDOWN AREA AVAILABLE AFTER AUGUST 22, 2026
PLY114 - PARKING LOT G14 EXPANSION PROJECT
14TH & B STREETS, ARCATA, CA

CAL POLY HUMBOLDT
FACILITIES MANAGEMENT - PLANNING, DESIGN & CONSTRUCTION
MARCH 2026 (REV. 0)

